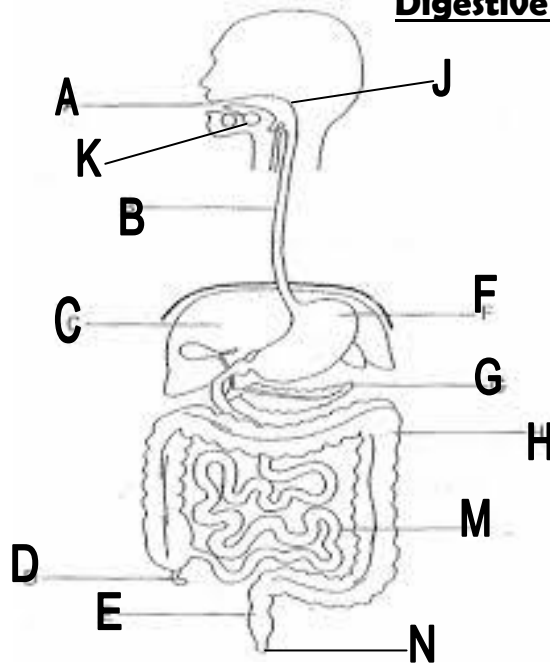


## Digestive System Review

- \_\_\_\_\_ 1. Rectum
- \_\_\_\_\_ 2. Liver
- \_\_\_\_\_ 3. Stomach
- \_\_\_\_\_ 4. Large intestine
- \_\_\_\_\_ 5. Esophagus
- \_\_\_\_\_ 6. Pancreas
- \_\_\_\_\_ 7. Mouth
- \_\_\_\_\_ 8. Anus
- \_\_\_\_\_ 9. Salivary glands
- \_\_\_\_\_ 10. Small intestine
- \_\_\_\_\_ 11. Appendix
- \_\_\_\_\_ 12. Pharynx



### Small (S.I.) or Large Intestine (L.I.) ?

\_\_\_\_\_

\_\_\_\_\_

\_\_\_\_\_

\_\_\_\_\_

\_\_\_\_\_

\_\_\_\_\_

\_\_\_\_\_

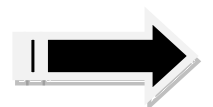
\_\_\_\_\_

- 13. Contains villi
- 14. Collects insoluble food
- 15. 22' long and 1" wide
- 16. Absorption of nutrients.
- 17. Stores feces
- 18. Found after the stomach.
- 19. Bile & pancreatic juices are released here.
- 20. Water is reabsorbed into the blood.

### Matching

- \_\_\_\_\_ 21. Gall bladder
- \_\_\_\_\_ 22. Liver
- \_\_\_\_\_ 23. Rectum
- \_\_\_\_\_ 24. Mouth
- \_\_\_\_\_ 25. Colon
- \_\_\_\_\_ 26. Villi
- \_\_\_\_\_ 27. Pancreas
- \_\_\_\_\_ 28. Epiglottis
- \_\_\_\_\_ 29. Stomach
- \_\_\_\_\_ 30. Appendix
  
- \_\_\_\_\_ 31. Esophagus
- \_\_\_\_\_ 32. Duodenum

- A. large intestine
- B. prevents food from entering trachea
- C. first part of the small intestine
- D. begins protein digestion
- E. stores bile
- F. starch digestion begins here.
- G. connects mouth to stomach
- H. futile (useless) organ of the intestines
- I. stores feces
- J. finger-like projections; increase the surface area of the small intestine
- K. produces bile
- L. produces pancreatic juice



**Fill- in:**

33. The action of the muscles pushing food through the digestive tract is called 33. \_\_\_\_\_
34. The digestion of . . . 34. \_\_\_\_\_  
begins in the mouth with the enzyme . . . \_\_\_\_\_  
found in the digestive juice . . . \_\_\_\_\_  
Mechanical digestion occurs when food is \_\_\_\_\_  
broken down in the mouth by the . . . \_\_\_\_\_
35. Digestion starts in the 35. \_\_\_\_\_
36. The enzyme that first acts on protein is 36. \_\_\_\_\_
37. Nutrients enter the blood through the process of 37. \_\_\_\_\_
38. The liver produces . . . 38. \_\_\_\_\_  
that is stores in the . . . \_\_\_\_\_  
and mechanically breaks down . . . \_\_\_\_\_
39. The most important organ of digestion is the 39. \_\_\_\_\_
40. Is anything digested in the large intestine? 40. \_\_\_\_\_
41. The organ that produces both pancreatic juice & insulin is the 41. \_\_\_\_\_
42. The heaviest gland of the body is the 42. \_\_\_\_\_

**Study for at least 15 minutes:**

- \*Digestive System NOTES
- \*Digestive System diagram
- \*"Old" Digestion QUIZ
- \*THIS review sheet

**\*\*Bring YOUR OWN #2 sharpened pencil with a super eraser!!**